

CIGWELD

AN ESAB BRAND

BLUEVENOM 4R-ROVER

WIRE FEEDER

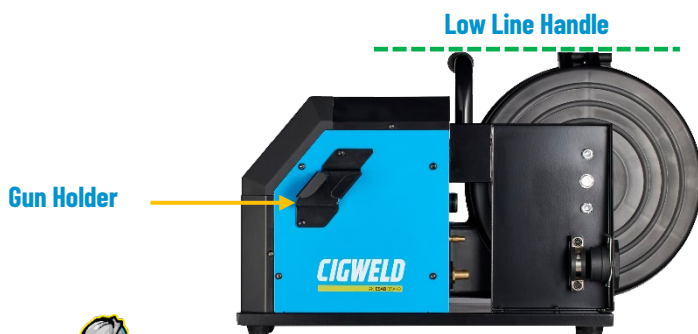
Step up to MIG SINGLE & DOUBLE
PULSE with the optional PulseMate™.

ENGINEERED FOR
SIMPLICITY & VERSATILITY!

DESIGNED, DEVELOPED & TESTED IN AUSTRALIA!

The new BlueVenom™ 4R-ROVER Digital Wire Feeder has been engineered to be as compact a 300mm spool feeder can be. With a low line carry handle the 4R-ROVER can fit in the most tight and constrained spaces.

The 4R-ROVER does just that – your wire feed companion ready to go where you need it. Its robust design coupled with an 8m interconnection cable and in-built hanging mount, allows the user to position the feeder conveniently to make the job easy – on the welding machine, floor, bench, gantry or boom setups!



EASY TO SET for PROFESSIONAL RESULTS

Here's the kicker – want Pulse? Of course you do! Just like with the BlueVenom XF353, you can connect the hand-held PulseMate™ pendant (sold separately) equipped with 8m of lead into the 4R-ROVER™. Together with the BlueVenom XF353 you can upgrade MIG to Single and Double Pulse giving you TIG likelooking welds through our simple yet intuitive SimplePulse™ MIG system!



The BlueVenom™ XF353 with the 4R-ROVER are the perfect setup for light to medium fabrication, maintenance and industrial repairs in the workshop, worksite, shipyard, or marina without compromising on quality or professional performance! Use it with the included premium BZ36 MIG Gun or swap it out for a Push-Pull or Spool Gun (each sold separately) for more precise control.



CIGWELD Flame Series BZ24 Spool Gun,
6m with EURO connector



CIGWELD Flame Series BZ36 Push-Pull
Gun, 8m with EURO connector

CIGWELD
AN ESAB BRAND



Blackwoods

blackwoods.com.au / 13 73 23

DESCRIPTION

Simply Plug n' Weld with the 4 Roll wire drive specifically designed to pair up with the all new BlueVenom XF353. With the XF353 you can deliver awesome arc characteristics in the most popular processes of, MIG - QuickSet & Manual modes, Gas & Gasless operation and Single & Double Pulse MIG with the optional PulseMate™.

The 4R-ROVER is equipped with the following features:

- 4x Roll Wire Drive system with 1 central pressure arm
- Suits 200/300mm Wire Diameter Spools with included 200mm spool adapter
- Covered MIG wire enclosure to protect from dust and moisture
- MIG Gun holder
- Low Line Carry Handle for constrained spaces
- Hanging bracket for safe gantry & boom setups and convenient maneuverability
- Locking brackets to XF353 to avoid wirefeeder sliding
- Plate Thickness Selection
- 10x Memory locations for quick weld setup:
5 for MIG Quickset and 5 for MIG Manual mode
- MIG Crater Fill function in 2T & 4T (just double tap)
- MIG Side door wire installation, side loader
- MIG Anti de-spooling safety feature
- MIG PulseMate™, Spool Gun & Push-Pull Gun Compatible



**SIMPLE TO USE
INTERFACE!**

WARRANTY PERIOD

3-Year conditional warranty. See terms and conditions at cigweld.com.au or in the Operating Manual, included with the machine.



4R-ROVER PACKAGE CONTENTS



- BlueVenom™ 4R-ROVER Wire Feeder Unit
- 8m Interconnection Lead
- Feed Rolls: 0.9/1.2mm V Groove (fitted)
- Operating Manual

ORDERING DETAILS

BlueVenom™ 4R-ROVER™ Wirefeeder
MFR NO: W3200401
P/N: 0402 0436

Get the Full Package (sold separately):

BlueVenom™ XF353 Power Source

Mfr No: W1400353 Part Number: 0402 0419

BlueVenom™ PulseMate™

Mfr No: W4200PM1 Part Number: 0402 0453

BZL36 Push-Pull Gun, 8m

Mfr No: W52BP36E8 Part Number: 0402 0504

BZL24 Spool Gun, 6m

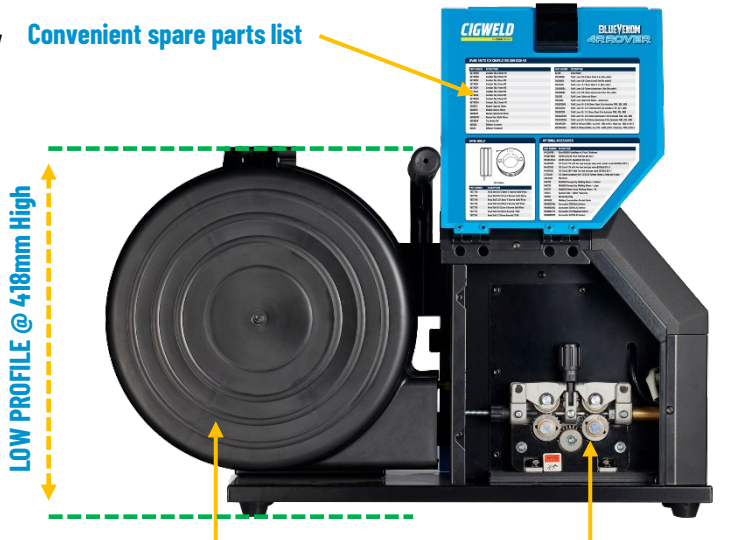
Mfr No: W52BS24E6 Part Number: 0402 0521

**BLUEVENOM
XF353**

TECHNICAL SPECIFICATIONS

Wirefeeder Dimensions	(L) 643mm x (W) 303mm x (H) 418mm
Wirefeeder Weight	14.5kg
Wire Feeder Motor Voltage	24 VDC
MIG (GMAW) Welding Output, 40°C, 10 min	350A @ 60% 271A @ 100%
Wire Feed Speed	Min. 2.0 MPM Max. 18 MPM
Interconnection Plug	10 Pin
Protection Class	IP23S

Convenient spare parts list



200/300mm Covered Spool Enclosure

**4 Roll Wire Drive System
with 1 Pressure Arm**



Includes 8m Interconnection Lead



XF353 and PulseMate™ Sold Separately.

CIGWELD
AN ESAB BRAND

