



Science.
Applied to Life.™



3M™ Confined Space Safety Solutions

Experts in confined space planning, access,
work inside, rescue & retrieval.

The Four Elements to Successfully Manage Your Confined Spaces

Confined spaces can be complicated and anyone, in any industry, can be exposed to working in and around them.

Confined spaces come in different sizes, in different locations of a facility or job site, and there may be different hazards in each one. There are also many different standards, regulations and company policies that may apply. While complicated, there are some best practices that will help you work safely in and around confined spaces.

Handling confined space entrances and exits, and while working in these areas, should always include:

- A site evaluation
- Identification of proper safety equipment and other required tools
- A trained rescue team that has developed a pre-planning program
- Certified training that involves practice and hands-on experience for all parties who will work in and around a confined space

There are many people involved in planning for and managing confined spaces, accessing and working inside confined spaces, and responsible for any rescue retrieval that may be needed. A confined space supervisor will want to confirm that contractors have had certified training, that all parties understand the hazards and what communication is needed inside the space as well as who will be performing rescue activities. The supervisor may also be the person responsible for controlling the entry (or identifying who will be) and supplying the necessary equipment. If you are responsible for many types of confined spaces it may be helpful for you to walk through each of the major elements, which may be categorized as follows:

- Plan – everything you need before you enter
- Access – what you need to access
- Work inside – communication, communication, communication
- Rescue retrieval – be prepared

Let's break these down a bit more.

Planning for Your Confined Spaces

Every time you enter a confined space you should complete an assessment. This includes a risk and hazard assessment of the space, an assessment of the people working in and around the space and the level of knowledge they have about confined spaces, as well as an assessment of the personal protective equipment (PPE) you need and the inventory you have available. The degree of supervision that will be needed will be based on these findings. If you don't have a Confined Space Competent Person (if you need training, please contact us) or anyone who strictly manages your confined spaces, you may need a third-party to complete a site assessment to help answer these questions.

What's the difference between a risk assessment and a hazard assessment?

Risk Assessment – This involves identifying and understanding the environment in and around the confined space, including entry location and size of the entry as well as if there are any lockout points and possible sources of energy or chemicals. These things are consistent and very rarely change.

Hazard Assessment – This is conducted to assess conditions workers are being exposed to that may present a danger, such as unsafe levels of gas requiring respiratory protection or loud noises requiring hearing protection. The conditions often change and therefore, this assessment should be constantly updated.

What type of training and certification do the workers need?

Workers must have adequate training and experience in the work involved to be competent to function safely in the confined space. Training required must be appropriate to the task, and to the individuals' roles and responsibilities, so that work can be carried out safely. Where the risk assessment indicates that properly training individuals can work for periods without supervisions you should check that they are able to follow the established safe system of work and that they have been provided with adequate information and instruction about the work to be done.

What PPE do you need?

Through the risk assessment and hazard assessment, and working through the hierarchy of controls, you should know what remaining hazards will require PPE protection. 3M has a wide range of PPE equipment that is compatible when working within confined spaces.

Accessing Confined Spaces

Prior to entry, the atmosphere within a confined space should be tested to check the oxygen concentration and to determine the presence of hazardous fumes, gases and vapours as well as respective levels of these potential hazards. Also, if not already addressed, you should also ensure you have the proper equipment for access such as a tripod or a side entry system.

Testing

You must carry out testing (e.g. from information about its previous content or chemicals used in a previous activity in the space) that the atmosphere in the confined space might be contaminated or to any extent unsafe to breathe. It should always be tested as a legal requirement.

Equipment to access

The various types of confined spaces may all have different access points — side entry, descending from above or crawling up through an entry point — and require different access equipment.

Work Inside Confined Spaces

When working in the confined space, communication and monitoring should be a constant. Environmental elements can change unexpectedly, plus communicating with workers outside the confined space may become difficult.

Communication

An adequate communication system must be in place and should enable communication: (a) between those inside the confined space; (b) between those inside the confined space and those outside; and (c) to summon help in case of an emergency. Whatever system is used — voice, tugs on a rope, telecom devices — all message should be able to be communicated easily, rapidly and clearly between relevant people, especially if they may not be able to see one another.

Monitoring while working

In some cases, there may be a need to limit the time that professionals can work in a confined space, for example where respiratory protection equipment is used, or under extreme conditions of temperature and humidity. This can also be the case when the confined space is so small that movement is severely restricted. For a large space and multiple entries, a log in or tally system may be necessary to check everyone in and out and to control the duration of time they are in the space.

Rescue Retrieval

Death or injury in confined space incidents can and often do occur. Ill-conceived attempts to save others who have collapsed or ceased to respond usually follows from a lack of proactive planning and appropriate training or identification of a proper rescue plan.

Have a rescue plan

A rescue plan should be in place before any person attempts to enter or begins to work in a confined space. Speak up and don't enter a confined space without confirming there is a rescue plan in place outlining how to react should a situation arise where rescue action is needed.

Trained to rescue

Evaluate the needs of a rescue team and what training is required for the team (or individual) to perform a rescue operation, including what additional PPE they may need to help someone out of a dire situation.

There is a lot to consider when managing and working in and around confined spaces.



Use content from this page and below

3M™ DBI-SALA® High Capacity Davit

Designed for manhole and confined space entry/retrieval applications. The Davit pivots for ease of rescue and has an adjustment for overhead clearance restrictions. The lower base adjusts to fit most standard entries. A range of bases and masts are available.

Features and Benefits:

Fall Arrest Anchorage

- Davit offer 4 x AS/NZS 5532 anchor points
- 2 anchor points for direct connection with fall arrest PPE
- 2 guided cable lifelines from a 3M™ mounted SRL.

One Front and One Back Cable Lifeline Guide

In addition to being a fall arrest anchorage, the 2 guided cable lifelines serve as:

- Rescue line with a mounted 3M™ DBI-SALA® rescue winch or 3M™ SRL with built-in rescue winch
- Raising / lowering line for people or load with a mounted 3M™ DBI-SALA® man and load-riding digital winch.

Winch and SRL Options

- Winch and SRL can be mounted on the mast with appropriate bracket.
- Front or back mounting choice is possible to allow the most convenient positioning for the user**, unlike some others systems that only allow the winch and SRL to be back mounted or allowing only one fixation to the mast.

Adjustable Reach and Height

- Selection of one of the 4 davit mast extension options allows the user to select the best height setting for the operating environment.
- Multiple pins position of the gusset arm and head allows the user to adjust the best reach and height needed for the application.
- Possibility of maximum height of anchorage point is 2.91 m, allowing use over most tanks edges and guardrails.

Base Options

- Fixed bases in galvanized steel or stainless steel are available to accommodate a variety of anchorage locations.
- One short reach and one long reach portable 3 piece base options allow full versatility of the systems.
- Maximum external width of long reach 3 piece base is 2.61 m, allowing the surround of very large confined space openings.**

3M™ DBI-SALA® Tripods

Note: Tripods come standard with integral pulley system and one quick connect winch/SRL mounting bracket.

3M Order Code	Model #	Description
70007488417	8000000	2.1 m, aluminium, square legs
70007490959	8000010	2.7 m, aluminium, square legs



images available from BW website 00366354

03184720

3M Order Code	Model #	Description
70804503178	8000106	Cart, Counterweight, Hc
70804501883	8000103	Davit System, Truck Hitch Mnt, Hc
70804503533	8000112	Davit, Mast Extension, 533mm
70804503541	8000113	Davit, Mast Extension, 838mm
70804503558	8000114	Davit, Mast Extension, 1143mm
70804503566	8000115	Davit, Mast Extension, 1448mm
70804503509	8000109	Davit, Mast, Universal
70804505306	8000117	Mtg Brkt, Winch Davit
70804503749	8000116	Extended Height Truck Hitch
70804498825	8000099	Davit Base, Deck Mnt, Galv, High Capacity
70804498833	8000100	Davit Base, Deck Mnt, SS, High Capacity
70804508409	8000130	Davit Arm, 14-28 Reach, Adj Height, AS/NZS
70804508417	8000131	Davit Arm, 27-44 Reach, Adj Height, AS/NZS
70804507856	8000128	Davit, Offset Arm, 14-28 Reach, Adj Height, AS/NZS
70804507864	8000129	Davit, Offset Arm, 27-44 Reach, Adj Height, AS/NZS
70804508425	8000132	Davit, Sys, 5-Piece, Short Reach, AS/NZS
70804508433	8000133	Davit, System, 5-Piece, Long Reach, AS/NZS
70804504853	8000121	Cap, Base Sleeve, Davit, High Capacity
70804504960	8000124	Adapter
70007464905	3590499	Mtg Brkt, 50'Rebel, Rtrvl Sala Tripod

3M™ Protecta® Rebel™ Self Retracting Lifelines



3590570

3M Order Code	Model #	Description
70007458675	3590520	6 m, galvanised cable, thermoplastic housing
70007464996	3590521	10 m, galvanised cable, thermoplastic housing
70007460440	3590570	15 m, galvanised cable, thermoplastic housing
70007466082	3590609	20 m Steel, thermoplastic housing with triple action karabiner

3M™ DBI-SALA® Emergency Retrieval Sealed-Blok SRL's

Sealed design makes it ideal for working in even the harshest of environments. All Emergency Retrieval Sealed-Blok Self Retracting Lifelines feature an ergonomic integral carrying handle and anchorage karabiner



3400944

3400986

3M Order Code	Model #	Description
70007460069	3400944	15 m stainless steel cable lifeline with stainless steel swivel snap hook and RSQ feature
70007460093	3400955	15 m galvanised cable with ZP swivel snap hook
70007452025	3400956	15 m stainless steel cable with stainless swivel snap hook
70007451720	3400880	25 m galvanised cable with ZP swivel snap hook
70007459830	3400881	25 m stainless steel cable with stainless steel swivel snap hook
70007460168	3400985	40 m galvanised cable with ZP swivel snap hook
70007452157	3400986	40 m stainless steel cable with ZP swivel snap hook

3M™ DBI-SALA® Advanced Digital Winches

Also available: stainless steel cable and Technora rope models



8518560

3M Order Code	Model #	Description
70007496816	8518560	18 m, 5 mm galvanised cable
70007496824	8518561	27 m, 5 mm galvanised cable
70007498184	8518582	58 m, 5 mm galvanised cable

3M™ DBI-SALA® Tripods Accessories



8003205

8003238

3M Order Code	Model #	Description
70007488649	8003205	Snatch block, eye bolt pulley assembly
70007488656	8003238	Leg mount pulley bracket
70007489506	8005048	Mounting Bracket to fit SRL/Winch to Tripod Leg
70007612537	9503094	Tripod carry bag for 8000000
70007612545	9503095	Tripod carry bag for 8000010

3M™ DBI-SALA® Emergency Retrieval Sealed SRL Accessories



3M Order Code	Model #	Description
70007452256	3401025	Mounting Bracket to fit Sealed Blok Retrieval SRL's to tripod leg

3M™ DBI-SALA® Salalift™ II Winch

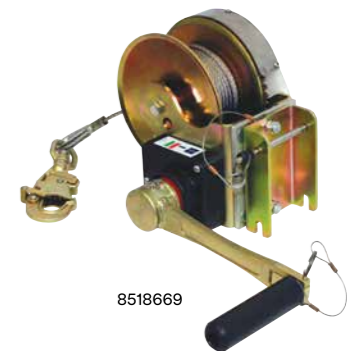
Also available: stainless steel cable models



8102001

3M Order Code	Model #	Description
70007489712	8102001	18 m, 6 mm galvanised cable
70007489746	8102009	27 m, 5 mm galvanised cable
70007489720	8102005	36 m, 5 mm galvanised cable

3M™ DBI-SALA® Basic Digital Winches



8518669

3M Order Code	Model #	Description
70007496907	8518669	15 m galvanised cable
70007496915	8518670	15 m stainless steel cable

3M™ DBI-SALA® Bosuns Chair/ Spreader Bar



3M Order Code	Model #	Description
70007926135	E522-SB1	Spreader bar with karabiner connections

3M™ DBI-SALA® Side Entry System

Designed for confined space entry/retrieval and rescue operations involving horizontal entries with vertical positioning or retrieval required inside the space. Note: Mechanical devices and attachments sold separately.



3M Order Code	Model #	Description
70007493102	8511233	Side entry arm for use with 8511231
70007493094	8511231	External adjustable tank collar

3M™ DBI-SALA® Portable Fall Arrest Posts

For use on top of transformers or other types of platforms with potential fall hazards. A range of mounting bases are available for multiple applications as well as a detachable davit arm for use in rescue.

Note: Mechanical devices and attachments sold separately.



3M Order Code	Model #	Description
70007495354	8516691	Portable Fall Arrest System
70007495370	8516693	Rescue Davit Arm

3M™ DBI-SALA® High Capacity Bases & Mounting Options

DBI-SALA portable and fixed bases work with a variety of davit arm and mast extensions to suit a variety of applications. **Fixed Bases** are ideal for work areas where frequent set-up and tear-down is required and a base can be permanently installed to an existing structure. **Portable Bases** are ideal when you need to move and access various confined space areas. **Also available:** a wide range of other fixed and portable bases in stainless steel and galvanised steel are also available, contact us for more information, or for assistance in determining the most appropriate base for your needs.



Fixed Bases		
3M Order Code	Model #	Description
70804498858	8000102	Wall Mount Base (Stainless Steel)
70804498783	8000095	Floor Mount Base (Galvanised)
70804498742	8000091	Flush Mount Base (Galvanised)

3M™ DBI-SALA® Delta™ Full-Body Harnesses

The safety harness that won't weigh you down

01522664

Delta™ harnesses combine a set of "industry-first" advancements, with popular features making it the workhorse of the industry. Today's Delta™ represents the culmination of more than twenty years of research, manufacturing know-how and on-the-job performance.

Features and Benefits:

REPEL™ Technology Webbing

- Water repellent to reduce attraction of mould and dirt - up to 5 times more abrasion resistance.

Quick-Connect Buckles

- Offers one-handed operation and smooth adjustment.

Easy Grip End Tabs and Keepers

- For fast, efficient and secure web adjustment.

Stand-Up Dorsal D-Ring

- Patented spring-loaded design automatically stands up ensuring fast, easy and safe connections to your fall arrest system.

Impact Indicator

- Rip-stitch indicator allows the user to quickly and easily inspect the harness for impact loading.

Label Pack

- Laminated PVC labels resistant to abrasion, UV, ambient heat, water and a wide range of chemicals. Features permanent indented print of critical product information ensuring it remains visible for the life of the harness.

RFID equipped

- Helps track equipment and manage safety inspection programs.



3M Order Code	Model #	Description
70007926416	803S0018	Small
70007925822	803M0018	Medium
70007925707	803L0018	Large
70007925046	803XL0018	Extra Large

Body Harnesses

3M™ DBI-SALA® ExoFit NEX™ Confined Space Harness

Ideal for the professional performing confined space access work, ladder access and rescue.

Front, rear and side Tech-Lite™ aluminium D-rings, Duo-Lok™ quick-connect buckles, Revolver™ vertical torso adjusters, non-slip hybrid comfort padding, wide padded lower back/hip pad, suspension trauma straps, confined space retrieval/attachment points, impact indicator, REPEL™ technology webbing.



3M ORDER CODE	Model #	Description
70007929378	623S2018	Small
70007926010	623M2018	Medium
70007925798	623L2018	Large
70007925764	623XL2018	Extra Large

Self-Contained Breathing Apparatus

Scott Safety ProPak-i T2 SCBA

The Scott Safety ProPak-i is a Type 2 SCBA set ideal for professional fire fighting, suitable for marine, petrochemical, oil and gas, general industrial environments, short duration confined space entry work and rescue applications. It can be offered with a range of air supplied options (SDC, Y2C, AC). The AC, airline attachment has both air in and air out functionality so therefore serves as a Rescue Second Man (RSM) and decontamination attachment as well as airline.

- Rigid backframe construction
- Easily removable pneumatics
- Cost effective to service and maintain
- Kevlar blend wrap around harness
- Side arms for increased user comfort
- Certified to AS/NZS 1716:2012 and EN137:2006 Type 2 MED



3M Order Code	Model #	Description
XP100142049	2027166	SCBA ProPak-I T2 V2 Industrial
AT010663915	2027167	SCBA ProPak-I-AC V2 Industrial
XP100544202	013190	Promask PP Left Quick Fit (LQF) Full Face Mask
XP100071271	1071671	Vision 3 (LQF) Full Face Mask Vision 3
AT010700105	1118245RAV	Cylinder 6.8L 300 Bar Carbon Fibre Right Angle Valve (AU Code)
AT010660218	1127413RAV	Cylinder 9L 300 Bar Carbon Fibre Right angle Valve (AU Code)
AT010787961	1127413RAVNZ	Cylinders 9L 300 Bar Carbon Fibre RAV (New Zealand Code)

ELSA Rapid Escape from Hazardous Environments

The Scott Safety ELSA (Emergency Life Support Apparatus) is designed for rapid escape from hazardous industrial and marine environments. Reliable and simple to operate the ELSA is trusted by thousands of users across the world.

- Automatic activation – a constant flow of air is provided upon opening the ELSA bag
- Integrated warning whistle for depleted air
- Easily rechargeable and reusable
- Unique cuboid hood with elastomeric neck seal for easy donning and excellent visibility
- Hood design enables it to be worn by those with beards or glasses
- Cylinders provided charged/full
- Marine Equipment Directive (MED Shipswheel) approved
- Certified to AS/NZS 1716:2012



3M Order Code	Model #	Description
AT010699992	2009419	ELSA 15 minute escape set with cylinder (AU Code)
AT010782012	2009419	ELSA 15 Minute Escape Set With Cylinder (empty) (New Zealand Code)

3M™ Scott Flite COV Airline Breathing Apparatus

- Easy to don bandolier harness with padded shoulder strap
- Optional 10 or 15 minute air supply for emergency escape from hazard situations, must be worn in IDLH
- Can be used with Scott range of positive pressure masks (sold separately)
- If primary air supply source is interrupted a switchover to emergency cylinder air supply is immediately activated by the automatic change over valve to facilitate safe egress
- Warning whistle informs user switch has been made to cylinder air
- Certified to AS/NZS 1716:2012



3M Order Code	Model #	Description
XP100148376	2031077	Flite COV Airline BA DV CEN
XP100544202	013190	Promask PP Left Quick Fit (LQF) Full Face Mask
XP100071271	1071671	Vision 3 (LQF) Full Face Mask Vision 3
XP100148707	2031535	200 bar 10 min steel cyl c/w pouch and reducer/hose Full (AU Code)
XP100148731		200 Bar 15 min steel cylinder c/w pouch and reducer/hose empty (New Zealand Code only)

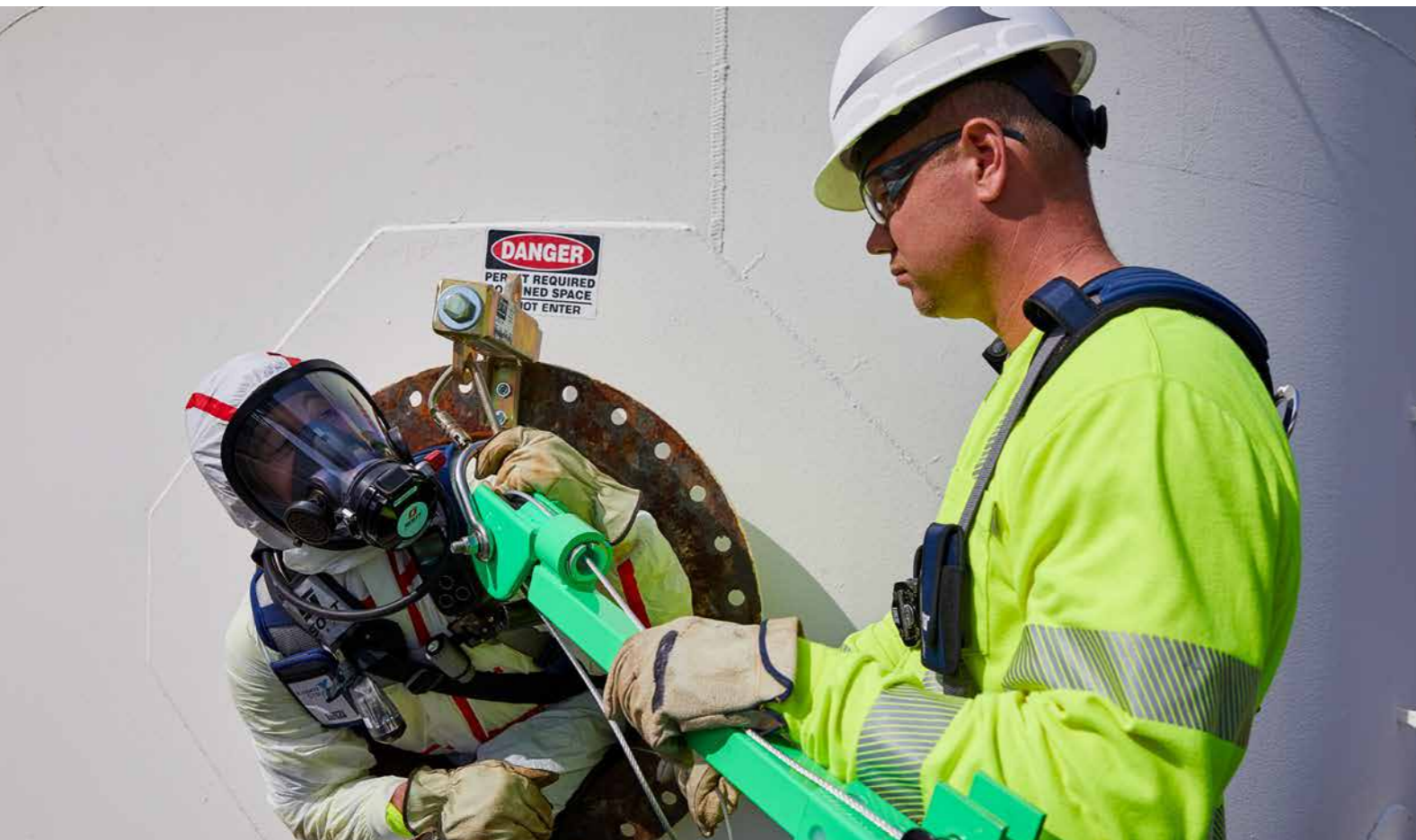
Modular Portable Air in Restricted Access Areas

The Scott Safety Modular Airline Trolley System provides a portable compressed air supply system for users of airline breathing apparatus. The Modular is available in 2 and 4 cylinder versions, 2 and 4 wearer versions and with optional extras such as airline filter units and electronic low pressure alarms.

- Ideal when working in restricted access areas
- Pressure reducer systems utilise the same robust and proven technology as Scott Safety SCBA
- Welded stainless steel tubular frame for robustness and corrosion resistance
- Compact and portable
- High performance pneumatics
- Hose reel will hold 90 metres of PVC or 60 metres of anti-static hose
- Hose, cylinder, face mask and breathing apparatus sets purchased separately
- Certified to AS/NZS 1716:2012



3M Order Code	Model #	Description
XP100069671	1051844	Modular Trolley with hose reel - 2 cylinder, 2 man (no hose)
XP100069812	1051880	Modular Trolley with hose reel - 4 cylinder, 4 man (no hose)
AT010700113	1118245T	Cylinder 6.8L 300 Bar Carbon Fibre T valve (AU Code)
AT010700121	1127413T	Cylinder 9L 300 Bar Carbon Fibre T valve (AU Code)
XP100069143	1051467	20 metre PVC hose black with CEN couplings
NT070008692	1127413TNZ	Cylinders 9L 300 Bar Carbon Fibre T valve (New Zealand Code only)



3M™ TA570 UniLite Vented Safety Helmet

- Type 1 ABS plastic vented safety helmet with crown cooling vents that is ideal for general industrial, construction and mining
- Comfortable, versatile and lightweight, with vents allowing improved air circulation
- All 3M safety caps have an accessory slot for fitting accessories such as earmuffs and faceshields
- A six point terylene harness and a terry towelling sweatband give added comfort and a gutter diverts rain away from the wearer



3M Order Code	Model #	Description
AT010705674	TA570:BL	Safety Helmet Abs (Type 1) Vented Blue
AT010705708	TA570:FLOR	Safety Helmet Abs (Type 1) Vented Fluro Orange
AT010705724	TA570:FLYE	Safety Helmet Abs (Type 1) Vented Fluro Yellow
AT010705732	TA570:GN	Safety Helmet Abs (Type 1) Vented Green
AT010705823	TA570:OR	Safety Helmet Abs (Type 1) Vented Orange
AT010705831	TA570:RD	Safety Helmet Abs (Type 1) Vented Red
AT010705864	TA570:WH	Safety Helmet Abs (Type 1) Vented White
AT010705872	TA570:YE	Safety Helmet Abs (Type 1) Vented Yellow

3M™ Protective Coverall 4515 White

The 3M Protective Coverall 4515 helps protect against light liquid splashes and hazardous dusts. Typical applications for this safety work wear may include: insulation installation, asbestos and lead abatement, coal dust in power plants, metal polishing, general powder handling, general industrial clean-up and processing, and granular fertilizer application.

- Breathable material technology for reduced heat stress and breathable comfort all day
- Excellent barrier against dry particles and limited liquid splash (CE Type 5/6)
- Elastic waist, ankles, and wrists for convenience and freedom of movement
- Meets inward leakage requirements of EN 1073-2 for protection against nuclear particles
- Does not contain components made from natural rubber latex to help prevent reactions from users with latex sensitivities or restrictions



3M Order Code	Model #	Description
GT700000224	4515	Coverall White Type 5/6 Size M
GT700000232	4515	Coverall White Type 5/6 Size L
GT700000240	4515	Coverall White Type 5/6 Size XL
GT700000257	4515	Coverall White Type 5/6 Size 2XL
GT700000265	4515	Coverall White Type 5/6 Size 3XL

3M™ Versaflor™ Spray Painters' Kit

The 3M™ Versaflor™ Spray Painters Kit, ALVM-206E is a ready-to-use assembly that delivers integrated supplied air respiratory, eye, and face with optional hearing protection. The kit includes Versaflor Supplied Air Regulator, V-500E with accessories and Versaflor High Impact Faceshield M-206 with comfort faceseal.

- Versaflor Supplied Air Respirator Kit, V-500E with Standard Breathing tube and Standard Waist Belt
- Versaflor High Impact Faceshield M-206 delivers integrated eye, face, and respiratory protection with optional hearing protection
- Excellent airflow distribution for improved comfort, lower noise and reduced fogging.



3M Order Code	Model #	Description
AT010587783	ALVM-206E	Versaflor™ Spray Painter Kit



3M Service & Maintenance Solutions

Whatever your service needs, our flexible service model offers localised access, quality service, and customised care. For easy and seamless service book through our dedicated administration team. For booking and more information email: 3mservice.anz@mmm.com

Our factory trained and certified 3M Service team specialise in service & maintenance of 3M's full range of products and systems, including below product range;

- Self Contained Breathing Apparatus (SCBA)
- Supplied Air Equipment (Escape & Airline Apparatus)
- Powered Air Respiratory Equipment
- Facial Fit Testing
- Fall Protection Equipment Inspections

So, whether it's responding to an urgent service request, providing scheduled annual servicing or simply providing user technical support, we put customers first and serve them as if their lives depended on it. Because sometimes, they do.

To arrange a service please email 3mservice.anz@mmm.com.





3M Australia*, offers a range of training and consulting services to fit your needs, ensuring you or your employees are thoroughly trained in a practical, hands-on environment.

3M Australia Pty Ltd, RTO Number 45498, is accredited by the National VET Regulator, ASQA, to deliver the following nationally recognised units of competency for work in confined spaces:

In-house Training Facilities

Custom-built, in-house training facility at our Sydney training centres provide a hands-on training experience. Practical demonstrations, individual exercises and theoretical assessment ensure our courses build confidence and enhance safety competence when working at heights

On-Site Training

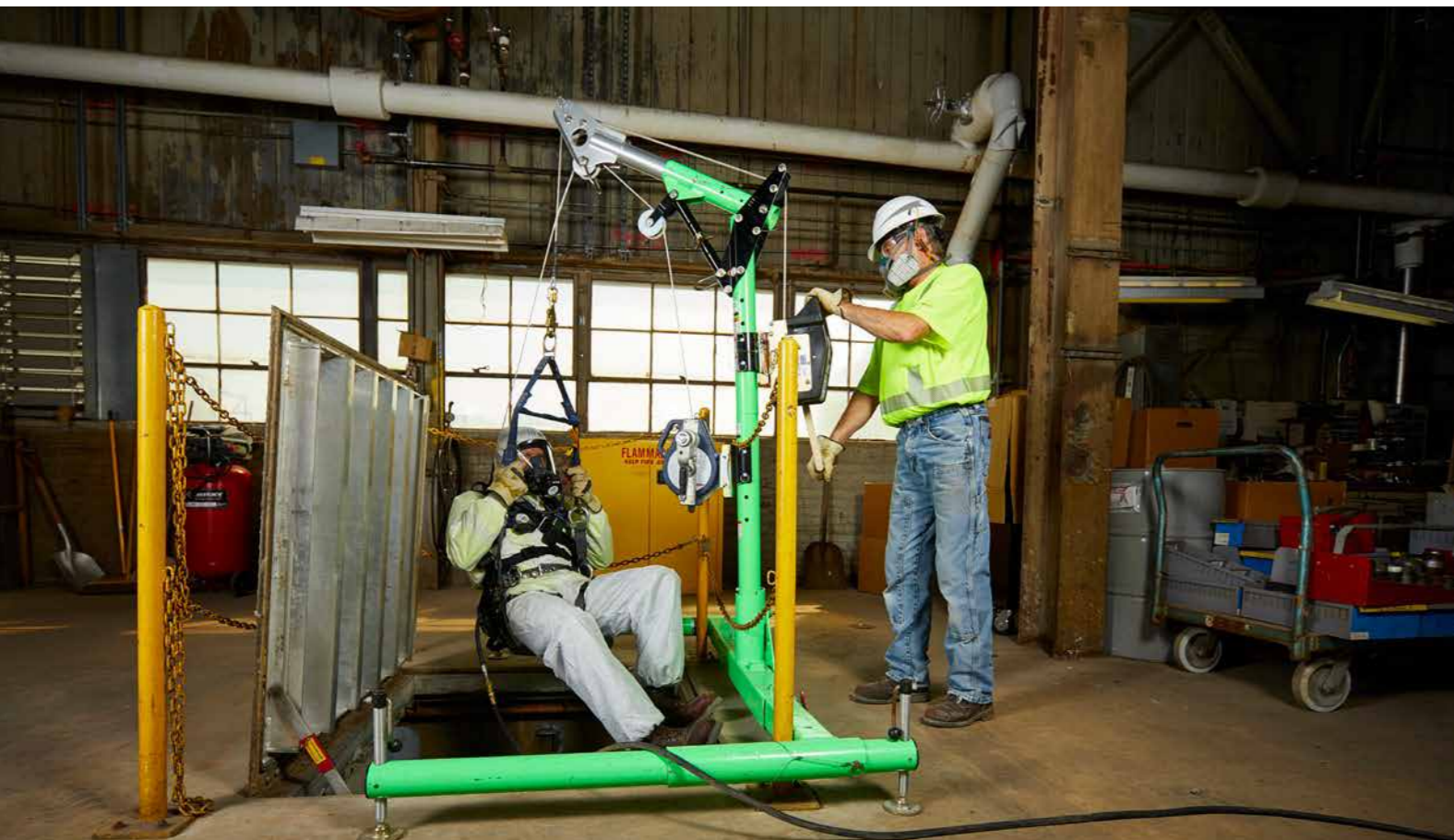
Training programs can be delivered at the client's site at all locations across Australia. If you can provide the students and the location, we will provide the equipment and experienced instructors.

Tailored Training

Our courses can be tailored to suit a company's individual requirements. We specialise in the design and implementation of training for industry sectors such as: civil, construction, mining, and wind energy. We also offer specialist courses such as: roof top and bridge rescue, jump form, tower crane and swing stage rescue, post fall recovery and wind turbine rescue.

On-site courses can be contextualised to ensure your team are comfortable using their issued equipment in real-life situations. We can also assist in developing rescue plans and SWMS documentation combined with the training so everyone if familiar with their role should an incident occur.

3m.com.au/fallprotectiontraining



Confined Space and Breathing Apparatus Courses

Course	Description	Qualification	Length	Trainer Ratio
Enter & Work in Confined Space	This course is designed for those workers that will work in, or on confined spaces as defined by Australian legislation. Additionally, those who plan or manage work that may involve confined space should undertake confined space training. The course includes recognising what constitutes a confined space, identifying hazards, implementing control measures, selecting appropriate tools and equipment, gas testing atmospheres and working in accordance with issued permits. Additionally it covers considerations for being able to rescue from confined spaces.	Statement of Attainment in "MSMPER200 Work in accordance with an issued permit, MSMPER205 Enter confined space, MSMWHS217 Gas test atmospheres, RIIWHS202D Enter and work in confined spaces"	2 Days	1:10
Operate Breathing Apparatus	This training has been designed to give students the necessary skills to use breathing apparatus to access confined spaces for work tasks and emergency rescue. Includes pre and post operational checks, donning and doffing and duration calculations.	Statement of Attainment in "MSMWHS216 Operate breathing apparatus"	1 Day	1:10
Combined Enter & Work in Confined Space & Breathing Apparatus	This is aimed at those persons required to access confined spaces which have irrespirable environments. The course combines the skills of the enter and work in Confined Space and Breathing Apparatus courses.	Statement of Attainment in "MSMPER200 Work in accordance with an issued permit, MSMPER205 Enter confined space, MSMWHS217 Gas test atmospheres, RIIWHS202D Enter and work in confined spaces, MSMWHS216 Operate breathing apparatus"	3 Days	1:10

For more information visit
3M.com.au/ppesafety
or call **1800 245 002 (AUS) 0800 212 505 (NZ)**



3M Fall Protection Business
Personal Safety Division

3M Australia Pty Ltd
Bld A, 1 Rivett Road
North Ryde, NSW 2113
TechAssist Helpline: 1800 024 464
Customer Services: 1300 363 565
Email: techassist@mmm.com
3M.com.au/ppesafety

3M New Zealand Limited
94 Apollo Drive
Rosedale, Auckland 0632
TechAssist Helpline: 0800 364 357
Customer Services: 0800 252 627
Email: techassist@mmm.com
3M.com/nz/ppesafety